

# 54BS616 HILLTOP ACRES PERFECTION ETV

840003239490072 aAa: 246 Beta Cas: A2A2 Kappa Casein: BB  
Born: 07/07/2021

**Genomic Gems, Preferred Sex**  
**JONMAR X KICKSTART X CADENCE**

## 04/2024 G-CDCB PERFORMANCE

<b>MILK</b> +1181	<b>FAT</b> +54 / +0.02%	<b>PROTEIN</b> +51 / +0.05%	<b>PPR</b> 180
PROD. 67%R N/A DTRS/N/A HRDS TYPE 69%R			
<b>PL +3.6</b>	<b>UDC +0.95</b>	<b>SCS 2.87</b>	<b>TYPE +0.60</b>
<b>Milking Speed 103</b>		<b>Conception (SCR) -9.6</b>	
<b>Cow Livability +1.5</b>			
<b>CE 2.6%</b>	<b>NM\$ \$622</b>	<b>DPR -0.9</b>	<b>MOB +0.2</b>

**Sire:** Portmann Bs Bays Jonmar  
**Dam:** Hilltop Acres Princess ETV 'E 91 E 91 MS'  
1-11 305d 3x 24,510 4.8 1,169 3.6 877  
2-11 365d 3x 44,160 5.7 2,525 3.8 1,696  
**MGS:** Hilltop Acres D Kickstart-ET  
**MGD:** Hilltop Acres Cad Paula 'VG 87 VG 88 MS'  
1-11 365d 3x 32,990 4.6 1,522 3.8 1,257  
7-3 365d 3x 38,860 4.8 1,878 3.7 1,433

	G-CDCB	-2	-1	0	1	2
Stature	0.60T					
Strength	0.30S					
Dairy Form	0.90O					
Rump Angle	1.00S					
Thurl Width	1.00W					
Foot Angle	0.10S					
R Legs - Side View	-0.30S					
R Legs - Rear View	0.00S					
Fore Attachment	0.80S					
Rear Udder Height	1.30H					
Rear Udder Width	1.20W					
Udder Depth	0.10S					
Udder Cleft	0.70S					
Teat Placement	0.20C					
Teat Length	-0.40S					
Udder Composite	0.95					



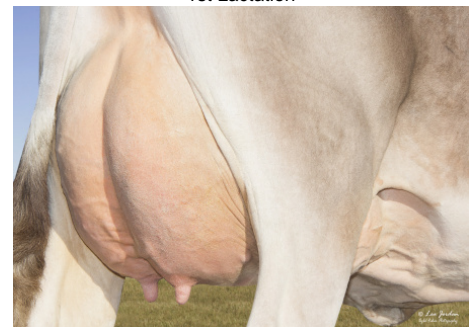
**Dam: Hilltop Acres Princess ETV 'E 91 E 91 MS'**  
2nd Lactation



**Hilltop Acres Perfection ETV**



**Dam: Hilltop Acres Princess ETV 'E 91 E 91 MS'**  
1st Lactation



**Dam: Hilltop Acres Princess ETV 'E 91 E 91 MS'**  
First Lactation

**NEW GENERATION GENETICS**

www.brownswiss.com

(920) 568-0554

E-mail: info@brownswiss.com

# 54BS616 HILLTOP ACRES PERFECTION ETV

---

840003239490072    aAa: 246    Beta Cas: A2A2    Kappa Casein: BB  
Born: 07/07/2021

## **MATING RECOMMENDATIONS**

### PPR:

1. Crazy Horse
2. Elan
3. Titos

### Udder Comp:

1. Diego
2. Time Out
3. Halano P

### Combined Components:

1. Crazy Horse
2. Titos
3. Elan

### DPR:

1. Halano P
2. Deluxe
3. Darwin

**NEW GENERATION GENETICS**

www.brownswiss.com

(920) 568-0554

E-mail: info@brownswiss.com